

Forensic Files

LOGIT Temperature Humidity Logger

Volume 12
June 2010

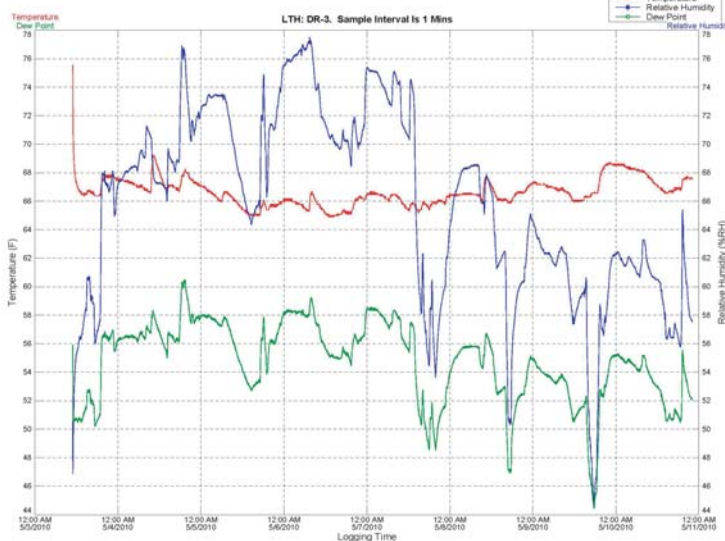
Pressler Forensics, Inc. uses the Supco 2 Channel Data Logger to help diagnose building and mechanical problems.

The Supco LOGIT LTH temperature & humidity data logger measures ambient room conditions. The logger features high and low alarms (with visual alarm indicator), single point offset calibration, and an adjustable sampling rate measuring once every second or once every 18 hours.

The LTH has a data storage capacity of 21,500 total samples for temperature and humidity. Using software to interface with the LTH data logger data is presented in raw, summarized and graphical formats. Line Graphs are easy read and can be customized to view data measurements to the minute.



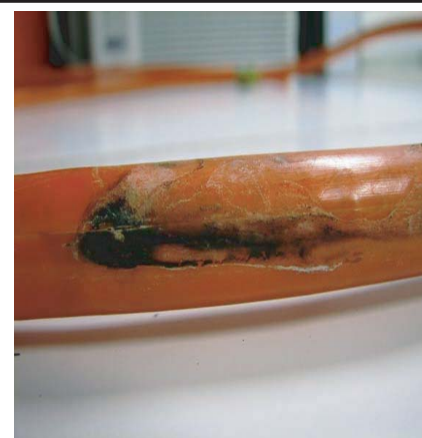
Photo of Data Logger & Example Graph



Plastic Tubing Failure

Plastic tubing failures pictured below are the result of premature aging of the tubing due to loss of plastic stabilizers, and plasticizers.

Below are pictures of KITEC Tubing (PEX-ALUNIMUM-PEX) failures investigated by Pressler Forensics, Inc.



Pressler Forensics, Inc.
Mechanical, Electrical, Plumbing & Piping Experts
18702 North Creek Parkway, Suite 213
Bothell, WA 98011

Phone (425) 485-3002
Fax (425) 485-8114
www.PresslerEng.com