

North Marina Infrastructure, Everett

Pressler Engineering, LLC is providing mechanical utility master planning for the Port of Everett, Everett North Marina. This project involves 65 acres of land with restaurants, retail, housing, and boat repair facilities.

We are working with Reid Middleton, Inc. on this project.



Everett Marina



The Cosmopolitan

The Cosmopolitan, Seattle

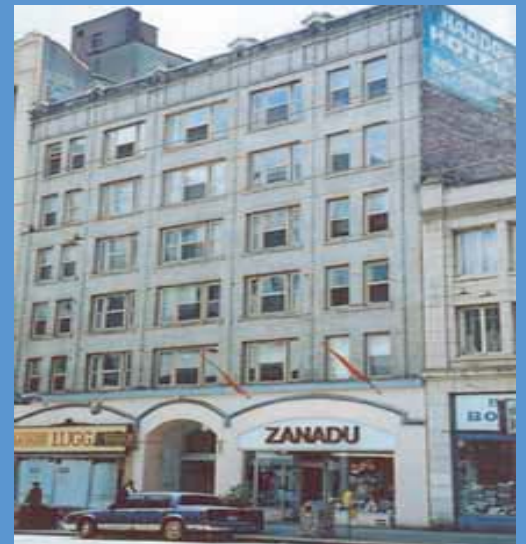
We are providing Peer Review of the mechanical design-build work for this new 33-story highrise in downtown Seattle. The project will break ground in Mid-April of 2005 and is scheduled to be completed in 22 months.

We are working directly with the developer, Continental Properties, Inc. of Bellevue, WA.

Haddon Hall, Seattle

Pressler Engineering, LLC is providing mechanical and electrical engineering services for Plymouth Housing Group. This project will consist of architectural improvements to the kitchens, all new plumbing fixtures, replacement of the old domestic water piping, and replacement of the sanitary waste and vent stacks in the building.

The Architect is Stickney Murphy Romine, PLLC.



Haddon Hall